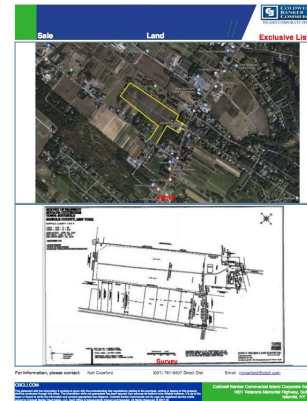


30105 Main Rd, Cutchogue, NY

30105 Main Rd, Cutchogue, NY, USA



Property Overview

Price/Rent PSF	\$2,499,000.00
Asset Type	Land
Trade Type	Sale
SQ. FT. Available	28.80
Date Available	06/11/2018

Contact



Neil Crawford
Agent

✉ ncrawford@cbcli.com

☎ +1 (631) 761-9407

Description

30105 Main Road in Cutchogue currently operates as Santa's Christmas Tree Farm and the operating business is being sold along with the farm. The property consists of a total of 28.8 acres on two separate tax lots. The lots can only be sold together. The first lot totals 22.5 acres and is covered with Christmas Trees. This lot is subject to a development rights easement (the development rights to this land have been sold) and can only be used for agricultural purposes. The front lot totals 5.29 acres (with development rights intact) and is improved with a two-story farmhouse totaling approximately 1,536 sf and a separate retail/warehouse building that is currently used in the operation of the Christmas Tree business. The retail/warehouse building totals approximately 8,100sf. This front lot has 118' of frontage on Main Road (Route 25). The property also features frontage and access from Depot Lane. Financial information for the business is available to qualified and serious buyers who will be required to sign a NDA.

Location

